



Simplifying NDT

MODSONIC

(An ISO 9001 : 2015 Company)

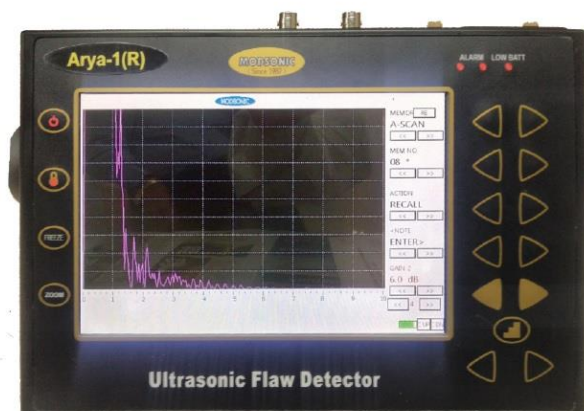
ULTRASONIC FLAW DETECTOR

(For Indian Railways)

Arya – 1(R)

- ★ Inbuilt Memory of 10000 Trace patterns With Labelling facility and 100 Calibration set-ups
- ★ Wider Display (152.4 x 91.44mm) With different colour sets for better Visibility
- ★ Light Weight and Compact Design
- ★ Facility for External Keyboard Attachment for feeding Note/Details & Labelling
- ★ Automatic Trigonometric Functions for angle beam Testing
- ★ USB Port for Data Storage in Pen Drive & Direct Printing

Approved as per RDSO Specification No M&C/NDT/125/2004, Rev-II, Jan.2017



Arya – 1(R)

<u>Parameters</u>	<u>Specification</u>
Test Range	50 mm to 5 meter (in steel). Fine mode adjustable in step of 0.1mm or 1mm.
Velocity	1000 m/s to 15000 m/s. Fine mode adjustable in step of 1 m/s.
Delay	Up to 3000mm. Fine mode adjustable in step of 0.01, 0.1 or 1mm.
Gain	80 dB Operable gain adjustable in 0.5, 1, 2, 6, or 14 dB step.
Rejection	0 to 100% FSH.
Rectification	Full wave rectified with filtering.
Frequency	1 MHz to 6 MHz (Wideband).
Test Modes	Pulse echo and transmit/receive.
Probe Connectors	BNC and LEMO Size-1 Both are provided.
Monitor	Dual gate adjustable in entire screen horizontally and Level of gate adjustable from 5% to 100 % of the screen.
Gate Expand	Expands Range to width of the gate.
A-Scan memory	10000 Trace Patterns can be stored, recalled or transferred to PC via USB port with all Notes/Details.
Calibration Set-up	100 different calibration set-ups can be Stored and Recalled.
Software	AryaSoft Interface software for data transferring, reporting and printing in PC.
Direct Printing	USB Port on the machine for direct printing by connecting the printer to the equipment.
Display	High Brightness Colour Wide TFT/LCD display (800x480 pixel, size 152.4 x 91.44 mm) for better signal representation and better visibility with 5 different colour sets.
Reference A-Scan	Reference A-Scan pattern of standard test object can be saved and recalled in the background for easy comparison during testing.
Dynamic DAC	Dynamic DAC curve can be Digitally plotted on screen using minimum 2 to maximum 10 points.
Digital Readout And Trig. Function	Depth, Beam path, Surface Distance and Amplitude Level are displayed in digital readout directly.
Update Rate	50Hz.
Power	Lithium-Ion Battery pack 14.4VDC, 4AH.
Battery Life	8 Hours of continuous operation on Full Charge
Charger	Input Voltage 100 to 240 VAC. Charge status indicator is provided.
Temperature	0 to 55°C.
Size	155 x 248 x 72 mm (HxWxD).
Weight	1.8 Kilograms with Battery.

All Products Conceived, Designed, Developed and Manufactured in India by:



Modsonic Instruments Mfg.Co.(P) Ltd,

Plot No.33,Phase III, GIDC Industrial Estate,Naroda, Ahmedabad-382 330, INDIA,

Tele : +91 (79),2281 1217, 22813131, 48908054 || Fax: +91(079)22820012

modsonic@modsonic.com || www.modsonic.com