



Simplifying NDT

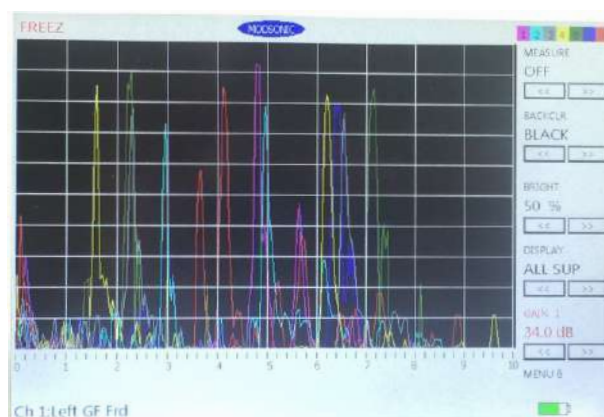
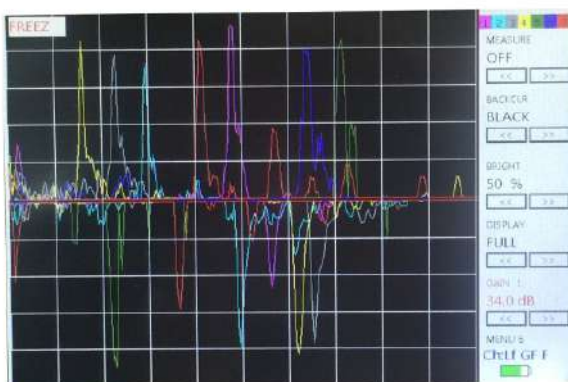
(AN ISO 9001 : 2008 COMPANY)

Arya16

MultiChannel Ultrasonic Flaw Detector

- ★ 8/16 channels.
- ★ Separate 8/16 A-Scan traces with different colors.
- ★ Light Weight (2 Kgs.)
- ★ Built-In bi-directional length/position display of probe
- ★ 200 built-in memory locations to store A-Scan and set-ups.
- ★ Use of USB flash drive provides virtually unlimited storage.

Ideal for Semi/Full Automation Applications.



Enquiries solicited from UT Systems integrators

Brief Technical Specification of Arya16

Test Range	: 10mm to 1000mm (@5920 M/sec Steel Velocity equivalent) continuously variable. It can be adjusted with hot key for coarse range step. Horizontal linearity $\pm 1\%$.
Velocity	: 1000m/s to 9999m/s. continuous adjustment. It can be adjusted using hot key in 7 preset values.
Delay	: 0-1000mm Continuous variable. It can be adjusted using hot key in coarse delay step.
Gain	: 0-80 db with 0.1,0.5,1,2,6,12 dB step selection. Vertical Linearity: $\pm 5\%$
Rejection	: Linear type (0-99%) of full screen height, 1% step.
Rectification	: Full wave rectified A-Scan.
Frequency	: 0.2 to 20 MHz
No of channels	: 16 channels with separate A-Scan traces, Any or all can be selected.
Test Modes	: Pulse echo or transmit/receive.
Transmitter	: Negative Square wave type.
Freeze/Peak Freeze	: Current display Freeze and Peak freeze to create echo dynamic pattern.
Connector	: BNC type connectors for all channels.
Monitor	: Dual gate for each channel adjustable in 1% screen width with Positive/Negative logic, Gate Expand modes.
Gate Expand	: Expands Range to width of the gate.
A-Scan memory (built-in)	: 200 Multicolored A-Scan with calibration parameters with measured value. Using external USB pen drive virtually unlimited A-scan and Calibration set-ups can be stored.
Calibration Set-up	: 100 calibration parameters set-ups.
Software	: Suitable PC software provided to review/ print report of the stored A-scan files.
Display	: TFT Color with LED backlight 152mm x 91 mm Viewing area, 800 x 480 pixels. All channels have separate base line with color selectable by user.
A-Scan Display	: Envelop or filled A-scan Pattern.
DAC	: Separate Dynamic DAC curve for each channel with additional -6 and -14 dB. DAC curve can be set as flaw monitor gate. Using 2 to 10 points DAC curve can be plotted.
Measurement	: Echo amplitude, Sound path, Echo to Echo distance. When angle probe is used then using trigonometric functions it calculates and displays Surface and Depth distance of defect.
Measuring Unit	: Millimeters.
PRF	: Maximum 8000 Hz which varies in step of 50 Hz as per parameter set value due to Auto limiting.
Update Rate	: 50Hz.
Power Source	: Operates on Built in Li-Ion rechargeable battery or on Mains using supplied charger. Operation time is 8 hours with fully charged battery.
Charger	: Input Voltage 100 to 240 VAC. Charge status indicator is provided.
Battery charge status	: Battery charge status by suitable LED indication on charger.
Battery Status	: Battery status indicator with auto low battery shut down to protect battery.
Encoder	: Positional encoder interface to indicate travel distance/position of probe.
Keyboard	: User friendly with direct access to frequently used functions.
Operating Temperature	: 0 to 55° C. (For operation)
Dimensions	: 247mm x 151mm x 70mm
Weight	: Approx 2 Kgs.

(Modification rights reserved)

Manufactured and Marketed by



MODSONIC INSTRUMENTS MFG. CO.(P) LTD.

Plot No.33,Phase III,GIDC Industrial Estate,Naroda,Ahmedabad 382330 INDIA

Tel: +91 (079) 2281 1217,2281 3131 Fax : +91(079) 2282 0012

Email : modsonic@modsonic.com , Web site : www.modsonic.com

MKT/042/00